

Solid State Logic

O X F O R D • E N G L A N D

Live

SOLSA 4.7.6 Install Notes

Document Revision History

4.7	May 2018
4.5	Dec 2017
4.0	May 2017

Contents

Introduction	3
Prerequisites	3
SOLSA Overview	3
Installation	4
System Requirements	4
Supported Operating Systems	4
Hardware	4
Download	4
Installing SOLSA	5
Completing The Installation	6
Starting The Application For The First Time	7
Help	7
Troubleshooting	8
SOLSA slow to start or does not start at all	8
Software Licence Agreement	9
Licence	9
Restrictions	9
Limitation of Liability	9
Indemnity	9
General	9

Introduction

This document describes the software installation procedure required to update your PC to this latest release of SOLSA software.

Prerequisites

Please ensure that you have the following items before attempting any part of the upgrade:

SOLSA Installation Instructions (This Document)
SSL_Live_PC_v4.7.6.33312.exe (a free download from the SSL website)
A SolidStateLogic.com account (visit the SSL website (solidstatelogic.com) to create one for free)
An active internet connection during installation
Appropriate privileges to install software on your PC

SOLSA Overview

The SSL Off/On-Line Setup Application, or SOLSA, allows creation and editing of Live console Showfiles on your laptop, desktop or tablet PC.

Almost anything that can be done on a console can be manipulated and configured 'offline' when access to a console is not possible. SOLSA also includes the ability to remotely control a console, giving real time access to all audio processing parameters. Connection is via Ethernet or, with the addition of a wireless router or access point, via Wi-Fi. Instructions on how to connect SOLSA to a console are described in the SSL Live Help System:
livehelp.solidstatelogic.com/Help/SetupRemote.html.

Features include console architecture configuration and setup of Fader Tile Layers and Banks. Stageboxes and I/O routing can also be assigned along with the creation of scenes and other automation editing. SOLSA also allows you to add effects, manipulate channel processing settings, bus routing and VCA assignments.

Installation

System Requirements

SOLSA is a high performance piece of software and requires a powerful computer to achieve the best possible performance. The following are a list of minimum requirements for SOLSA to run correctly on your computer.

Please note: In some cases (usually when multiple versions of the SSL software and different version of V3 and V4 Audinate Dante Controller have been installed) Windows doesn't correctly keep track of which program has installed the service in which order, and cannot correctly uninstall the Dante services. In these rare cases it may be necessary to manually uninstall all the SSL programs and Dante Controller, reboot your computer and then install the new versions that utilise the V4.0 DAPI.

Supported Operating Systems

Windows 7 64-bit, Windows 8 64-bit, Windows 8.1 64-bit or Windows 10 64-bit operating system.

Important note: Installations of the Windows operating systems listed above may be run on Intel-based Apple Mac computers using a multi-boot utility such as Boot Camp or virtual environments such as Parallels or VMWare Fusion.

The hardware requirements listed below still apply to these environments. In particular, please ensure that the Windows virtual machine is assigned at least 8 GB of RAM.

Hardware

- Recommended minimum of 8 GB RAM
 - 16 GB RAM recommended if running under a virtual machine on Mac
- 2.6 GHz Dual core CPU or higher
- 200 MB hard disk space
- Minimum screen resolution of 1280 x 1024 recommended

Download

To download SOLSA visit the SSL website (solidstatelogic.com/live/I500/solsa).

Once the download is complete locate the Live_V4.7.6_SOLSA.zip file on your hard drive and unzip the file. Read these Install Notes carefully before attempting to run the installation.

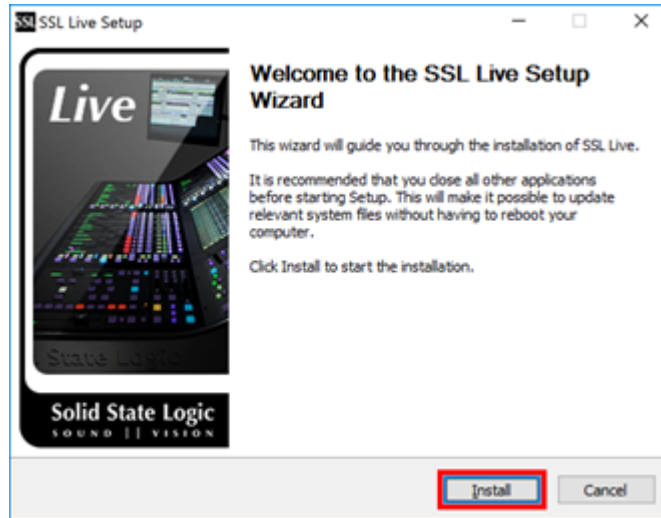
Installing SOLSA

Right click on the .zip file and click Extract All, then find the extracted folder and open it.

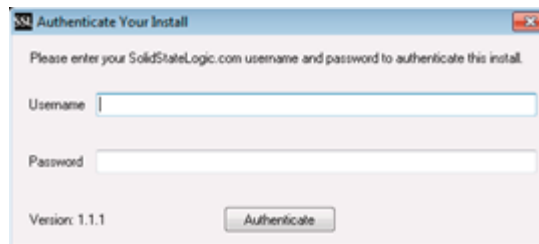
Double-click on the .exe file to start the installation.

If prompted, click **Yes** to allow the program to make changes to your PC.

Read and follow the on-screen instructions carefully. When you are ready to start the installation, click on the **Install** button:



If this is the first time SOLSA has been installed on your PC, you will now be asked to provide your solidstatellogic.com username and password to authenticate the install. Updates to SOLSA do not require this step.



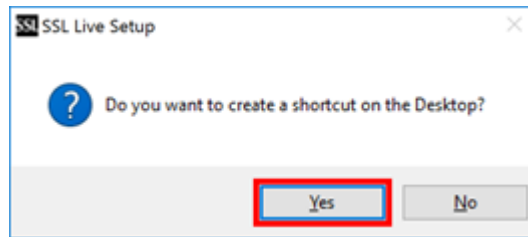
Note: If you do not have a solidstatellogic.com account, please visit store.solidstatellogic.com/user/register. Follow the on-screen instructions to create your free account and, once completed, enter the same details into the installer's authentication pop-up.

Click the **Authenticate** button when finished to proceed with the installation.

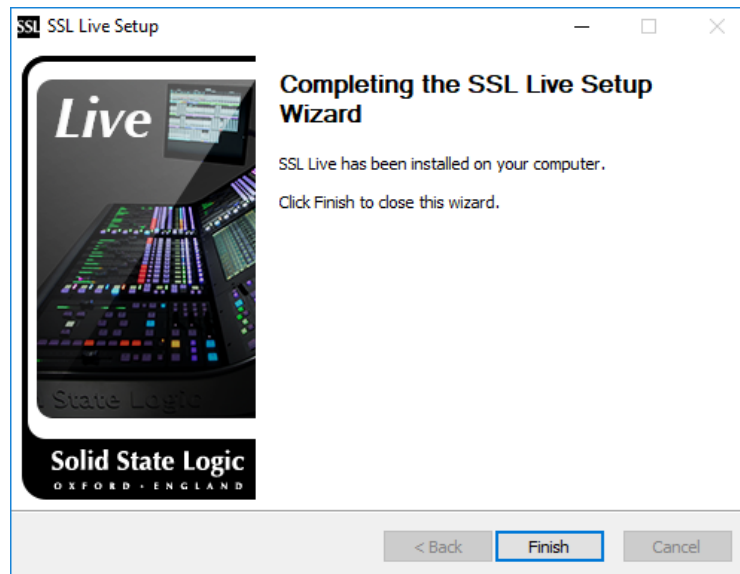
Important Note: You must have an active Internet connection to complete this process.

Completing The Installation

You will be asked if you wish to create a shortcut to the SOLSA software on your desktop, click **Yes** if you wish to do so.



Now click **Finish**.



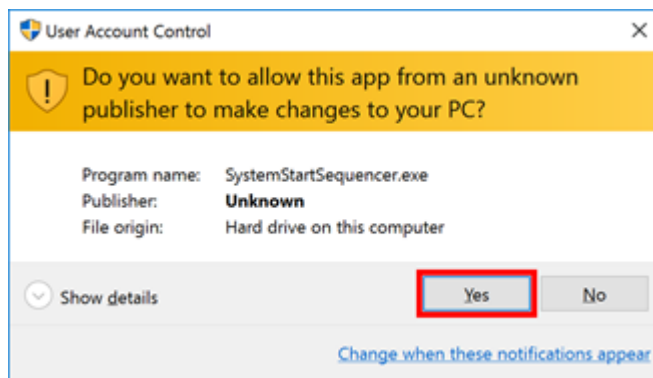
You may be prompted to restart your PC following the SOLSA install.

Starting The Application For The First Time

If during installation you selected to add a shortcut to the desktop, you may start the software from this shortcut (named "SSL Live SOLSA").

Alternatively, the software can be accessed from the **Start Menu** or searching programs and files for "SSL Live".

If presented with a Windows User Account Control prompt, click **Yes** to proceed:



SOLSA will now launch and a Solid State Logic splash screen and progress bar will appear. The initial launch of the software can take some time.

Help

The SSL Live Help link can be accessed from the Start Menu (internet access required), online or downloaded as an app from the Apple App Store and Google Play Store.

Live Help online can be accessed from livehelp.solidstatelogic.com

The Help app can be found in the app stores by searching "SSL Live Help" or from these links:

Apple - itunes.apple.com/gb/app/ssl-live-help/id1216767067?mt=8

Google Play - play.google.com/store/apps/details?id=com.SolidStateLogic.LiveHelp&hl=en

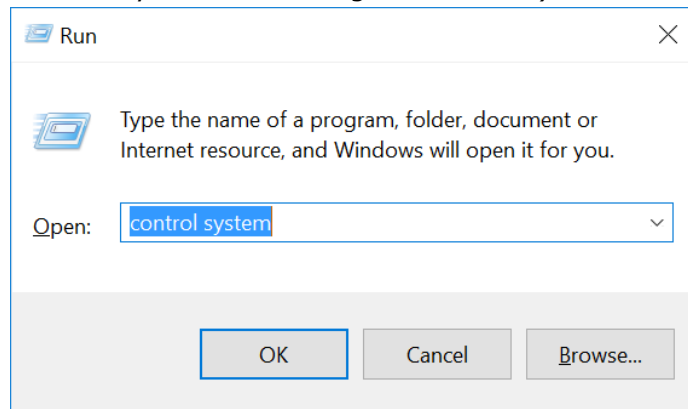
Troubleshooting

SOLSA slow to start or does not start at all

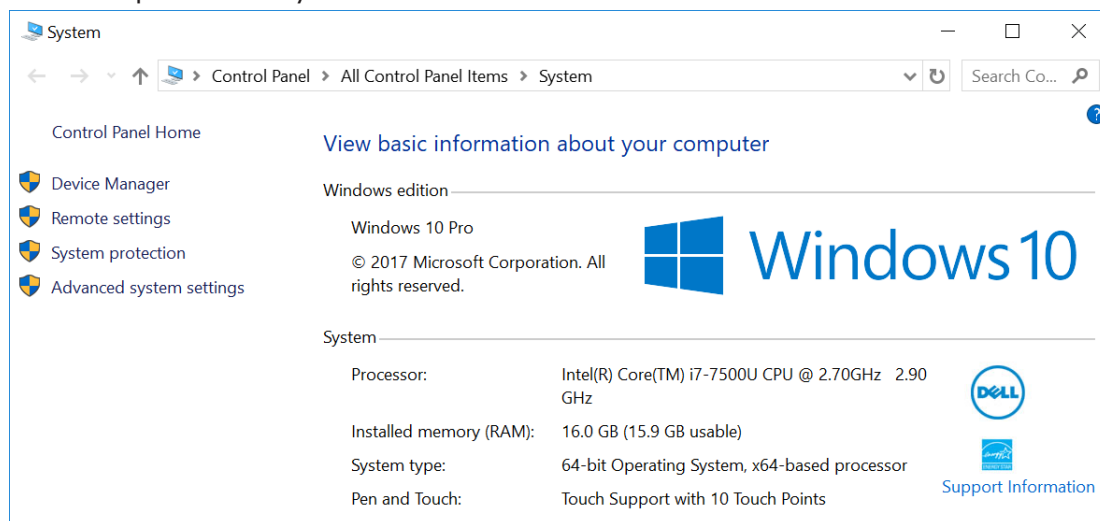
Ensure you have met the minimum system requirements listed at the beginning of this document. A 64-bit version of Windows and 8GB RAM is required to run SOLSA. If you are running SOLSA under a Windows virtual machine (e.g. Parallels or VMware Fusion) please ensure you have allocated sufficient resources to the virtual machine.

Check Your Windows System Specifications

In Windows, open the Run dialog (Windows key + R), type "control system" (or right-click on the Windows start icon and select "System" if running Windows 10) and click OK.



This will open the System window, in which information about your computer can be found. Ensure that your system information meets the minimum recommended requirements for SOLSA. Below is an example of what you should see on a Windows 10 installation:



Set RAM Allocation In Parallels

- Shut down the Windows virtual machine
- From within Parallels, choose Virtual Machine > Configure > General
- Move the Memory slider to 8GB
- Restart Windows

Set RAM Allocation In VMware Fusion

- In VMware Fusion, select Window > Virtual Machine Library from the menu bar
- Select the Windows virtual machine and click Settings
- Navigate to System Settings > Processors & Memory
- Use the slider to allocate a minimum of 8GB RAM

Software Licence Agreement

Red Lion 49 Limited trading as Solid State Logic ('SSL') is willing to license this L200/L300/L500 Live Console software and accompanying documentation for this product (the 'Software') to the customer (the entity that purchased the product and software) on the condition that you read and accept all of the terms in this agreement. Please read the terms below carefully. By continuing to install the software and using the enclosed information to license the software you acknowledge that you have read and understood the agreement and agree to be bound by its terms and conditions. If you do not agree to these terms then do not open this package, discontinue the installation process and contact your local SSL representative for advice.

Licence

SSL hereby grants you a non-exclusive licence to install and use the Software in machine-readable form on a single console. You may copy the software only for backup purposes, provided that you reproduce all copyright and other proprietary notices that are on the original copy of the Software.

Restrictions

SSL retains the right, title and interest in and to the Software, and any rights not granted to you herein are reserved by SSL. You may not reverse engineer, disassemble, decompile, or translate the Software, or otherwise attempt to derive the source code for the Software, except to the extent allowed under applicable law. If applicable law permits such activities, any information so discovered must be promptly disclosed to SSL and shall be deemed to be the confidential proprietary information of SSL. Any attempt to transfer any of the rights, duties or obligations hereunder is void. You may not rent, lease, loan or resell for profit the Software, or any part thereof. You may not reproduce, distribute or create derivative works of the Software.

Limitation of Liability

In no event will SSL or its suppliers be liable for profits or other consequential, incidental or special damages however arising, including negligence, in connection with the software or this agreement, even if SSL has been advised of the possibility of such damages. In no event will SSL's liability in connection with the Software, regardless of the form of action, exceed £100.

Indemnity

You agree to defend and indemnify SSL against all claims, losses, liabilities, damages costs and expenses, including legal fees, which SSL may incur in connection with your breach of this Agreement.

General

The Software is a commercial item. This Agreement is governed and interpreted in accordance with the laws of the United Kingdom.

Solid State Logic

O X F O R D • E N G L A N D

Visit SSL at:
www.solidstatelogic.com

© Solid State Logic

All rights reserved under International and Pan-American Copyright Conventions

SSL®, Solid State Logic® and Tempest® are ® registered trademarks of Solid State Logic.

Live L200™, Live L300™, Live L500™, L500 Plus™, Blacklight™, Network I/O™ are ™ trademarks of Solid State Logic.

Dante™ and Audinate™ are trademarks of Audinate Pty Ltd.

All other product names and trademarks are the property of their respective owners and are hereby acknowledged.

No part of this publication may be reproduced in any form or by any means, whether mechanical or electronic, without the written permission of
Solid State Logic, Oxford, OX5 1RU, England

As research and development is a continual process, Solid State Logic reserves the right to change the features and specifications described herein without notice or obligation.

Solid State Logic cannot be held responsible for any loss or damage arising directly or indirectly from any error or omission in this manual.

PLEASE READ ALL INSTRUCTIONS, PAY SPECIAL HEED TO SAFETY WARNINGS.

E&OE

May 2018