

Solid State Logic
S O U N D | | V I S I O N

SOLSA
SSL OffLine Setup Application

Live Console Offline Software

V2.1.10 Download & Installation Notes

Website Download Only

Please check you have the following items:

- | | |
|----------------------------|-----------------|
| I SOLSA Installation Notes | (this document) |
| I SSL_L500_2.1.10 | P72A032411 |

*If any of the listed items are missing, please contact your local SSL representative
before attempting the upgrade*

***This document contains essential information – please read it carefully before making
any attempt to install the software***

Solid State Logic

S O U N D | | V I S I O N

Begbroke, Oxford, England, OX5 1RU • +44 (0)1865 842300

320 West 46th Street, 2nd Floor, New York, NY 10036, USA • +1 (1) 212 315 1111
3700 Wilshire Blvd, Suite 720, Los Angeles, CA 90010, USA • +1 (1) 213 249 9229
3-55-14 Sendagaya, Shibuya-Ku, Tokyo 151-0051, Japan • +81 (0)3 5474 1144
7 bis, rue de la Victoire, le Blanc Mesnil, Paris 93150, France • +33 (0)1 48 67 84 85
Via Timavo 34, 20124 Milano, Italy • +39 (0)39 2328 094

Visit SSL at URL: www.solidstatelogic.com

© Solid State Logic

All Rights reserved under International and Pan-American Copyright Conventions

Live L500, Blacklight, ML32.32 are trademarks of Solid State Logic

Solid State Logic®, **SSL®**, **Logictivity®** and **Total Recall** are
registered trademarks of Solid State Logic

All other product names and trademarks are the property of their respective owners

No part of this publication may be reproduced in any form or
by any means, whether mechanical or electronic, without the
written permission of Solid State Logic, Oxford, England

Initial Release: August 2014

As research and development is a continual process, Solid State Logic reserves the right
to change the features and specifications described herein without notice or obligation

E&OE

SOLSA OVERVIEW

The **SSL OffLine Setup Application** or SOLSA allows creation and editing of Live console Showfiles on your laptop or desktop PC. Almost anything that can be done on a console can now be manipulated and configured 'offline' when access to a console is not possible.

This includes console architecture configuration and setup of Fader Tile Layers and Banks. Stageboxes and I/O routing can also be assigned along with the creation of scenes and other automation editing. SOLSA also allows you to add effects, manipulate channel processing settings, bus routing and VCA assignments.

SOLSA includes the same Help System as the Live console software, offering a built in user guide with tutorials and reference sections.

SYSTEM REQUIREMENTS

SOLSA is a high performance piece of software and requires a powerful computer to achieve the best possible performance. The following are a list of minimum requirements for SOLSA to run correctly on your computer.

Supported Operating Systems:

Windows 7 64-bit, Windows 8 64-bit or Windows 8.1 64-bit operating system

Note: Installations of the Windows operating systems listed above may be run on Intel-based Apple Mac computers using a multi-boot utility such as Boot Camp. SOLSA has not currently been tested running under any 'virtual' Windows environment on the Apple Mac platform.

Hardware:

Recommended minimum of 8GB RAM

2.6GHz Dual core CPU or higher

200MB hard disk space

Minimum screen resolution of 1280 x 1024 recommended

WHAT YOU WILL NEED

To complete the SOLSA installation you will need the following:

A SolidStateLogic.com account (visit Solid State Logic Registration to create one for free)

An active internet connection during installation

Appropriate privileges to install software on your PC

REGISTRATION

To install SOLSA you will need to have an active SolidStateLogic.com account, without one you will not be able to complete the installation process. If you already have an active account you will be able to use your standard login.

Registration can be done for free by visiting the SSL website registration page (<http://store.solidstatelogic.com/user/register>).

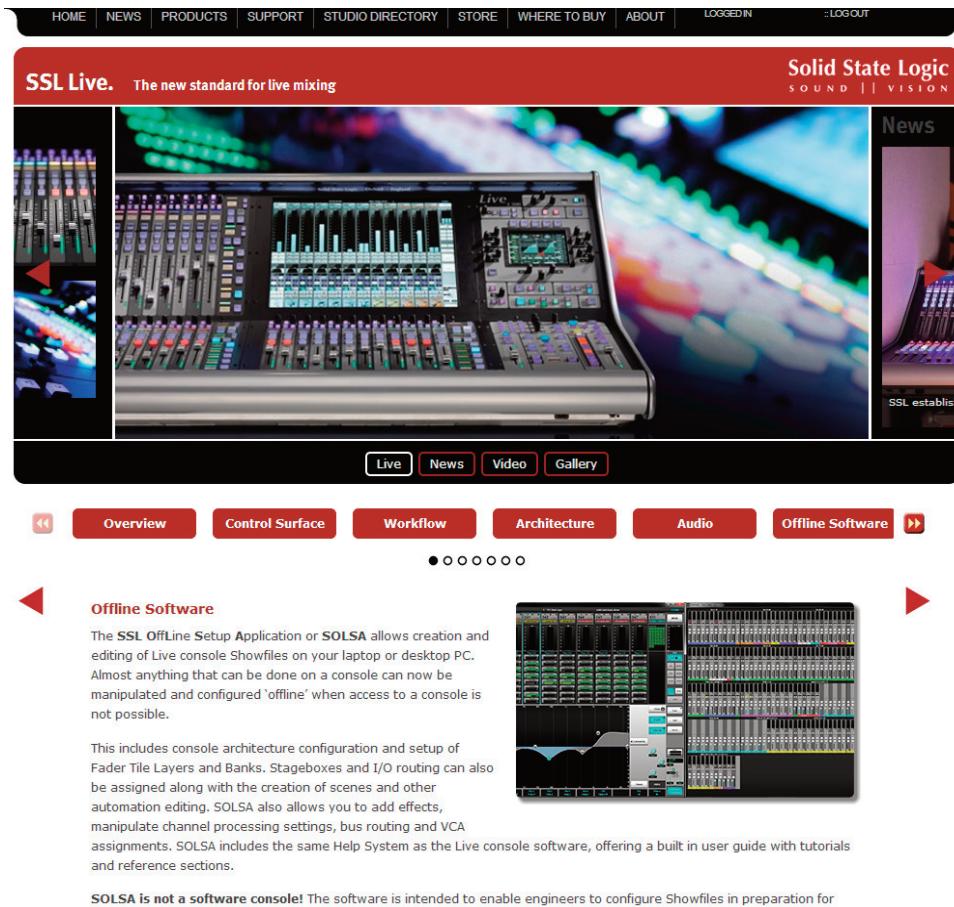
The screenshot shows the registration page for Solid State Logic (SSL). The page has a dark header with the SSL logo and navigation links: HOME, NEWS, PRODUCTS, SUPPORT, STUDIO DIRECTORY, STORE, WHERE TO BUY, ABOUT, LOGIN, and REGISTER. Below the header is a banner with the text "Solid State Logic SOUND || VISION || VALUES" and "Store. This is SSL. Welcome To The SSL Online Store". The main content area is divided into two columns. The left column contains a search bar and a product catalogue with links to various products. The right column contains the "User account" section, which includes a "Create new account" button, a "Log in" link, and a "Reset your password" link. The "User account" section has three main sections: "Account information", "Privacy Statement", and "Email Opt In/Out". The "Account information" section has fields for "Username" and "E-mail address", both marked with an asterisk. Below the "E-mail address" field is a note: "A valid e-mail address. All e-mails from the system will be sent to this address. The e-mail address is not made public and will only be used if you wish to receive a new password or wish to receive certain news or notifications by e-mail." The "Privacy Statement" section has a checkbox for "Privacy Statement" and a note: "In order to proceed please tick the box to confirm you have read the Privacy Policy." The "Email Opt In/Out" section has three checkboxes: "Product Updates", "Promotional Materials", and "Don't Send Me Stuff". The "Product Updates" and "Promotional Materials" checkboxes are checked. The "Don't Send Me Stuff" checkbox is unchecked. Below the "Email Opt In/Out" section is the "Profile Information" section, which has a "User Type" dropdown menu.

Once you have created your account make a note of the user name and password you entered during the registration. You will need these to complete the installation of SOLSA.

DOWNLOAD

To download SOLSA visit the Solid State Logic website (<http://www2.solidstatellogic.com/live/offlinesoftware>).

Once the download is complete locate the SOLSA.zip file on your hard drive and unzip the file.

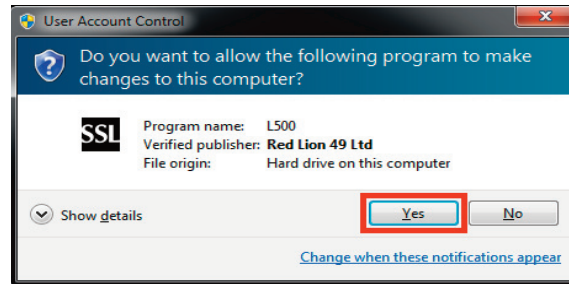


Open and read the Installation notes carefully before attempting to run the installation.

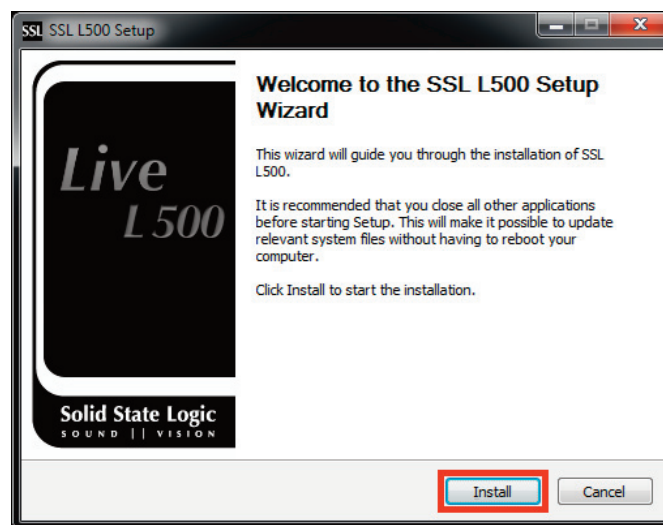
INSTALLATION

Double-click on the .exe file to start the installation

If prompted, allow the program to make changes to your computer:



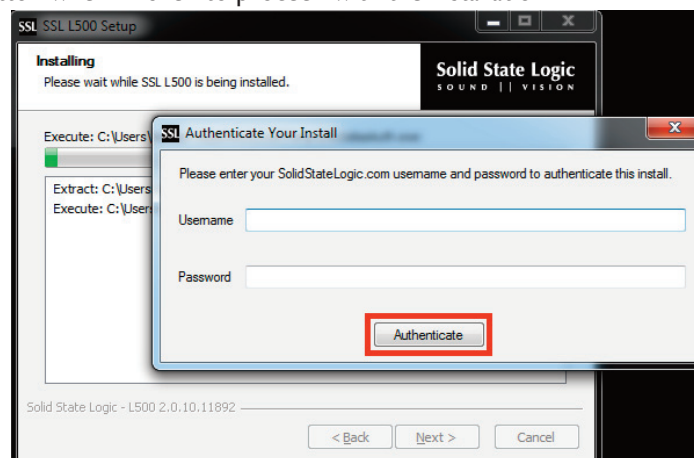
Read and follow the on-screen instructions carefully. When you are ready to start the installation, click on the **Install** button:



You will now be asked to provide your SolidStateLogic.com username and password to authenticate the install.

Note: If you do not already have a SolidStateLogic.com account, please visit www.solidstatelogic.com and click on the **REGISTER** link in the top-right corner of the home page. Follow the on-screen instructions to create your free account and, once completed, enter the same details into the installer's authentication pop-up.

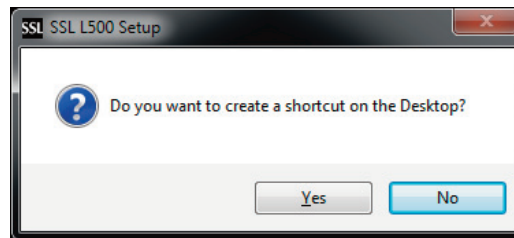
Click the **Authenticate** button when finished to proceed with the installation



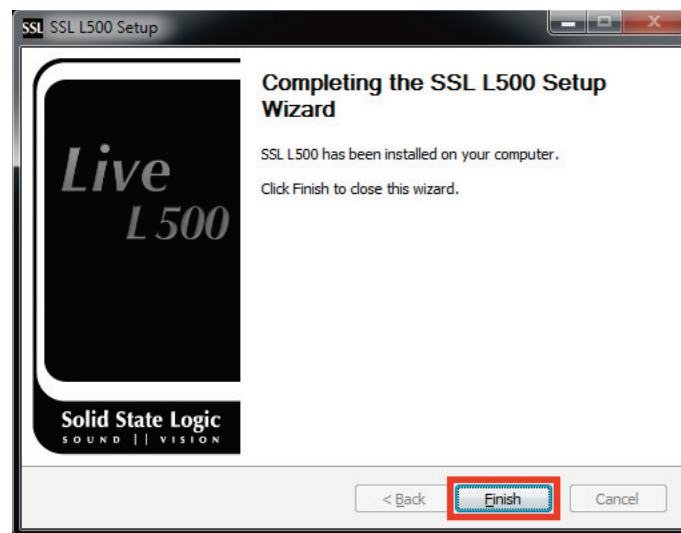
Note: You must have an active Internet connection to complete this process

Completing the Installation

You will be asked if you wish to create a shortcut to the SOLSA software on your desktop, click Yes if you wish to do so.



Once the steps of the installation are complete click on **FINISH**

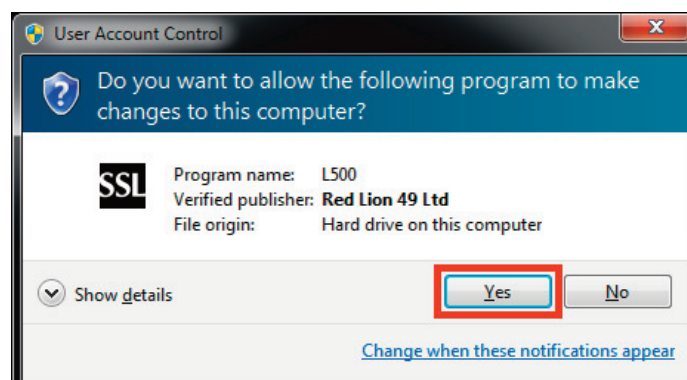


Starting the application for the first time

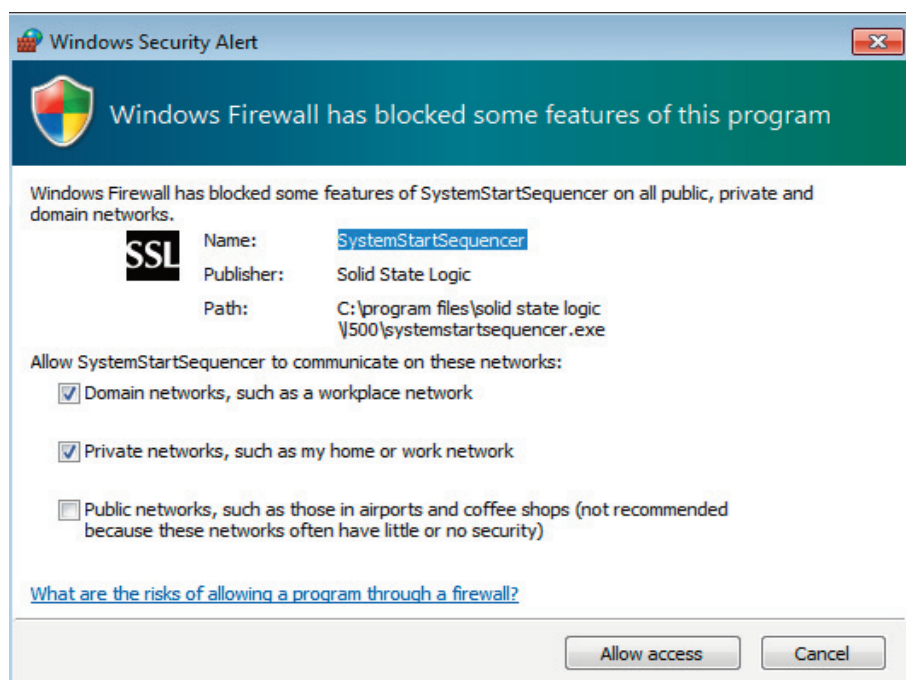
If during installation you selected to add a shortcut to the desktop, you may start the software from this shortcut (named "SSL L500").

Alternatively, the software can be accessed from the Start Menu > All Programs > Solid State Logic > L500 > L500 2.1.10.12333, or searching programs and files for "L500".

If presented with a Windows User Account Control prompt, click **Yes** to proceed:



You may also be presented with a series of Windows Security Alert pop-ups relating to Windows Firewall:



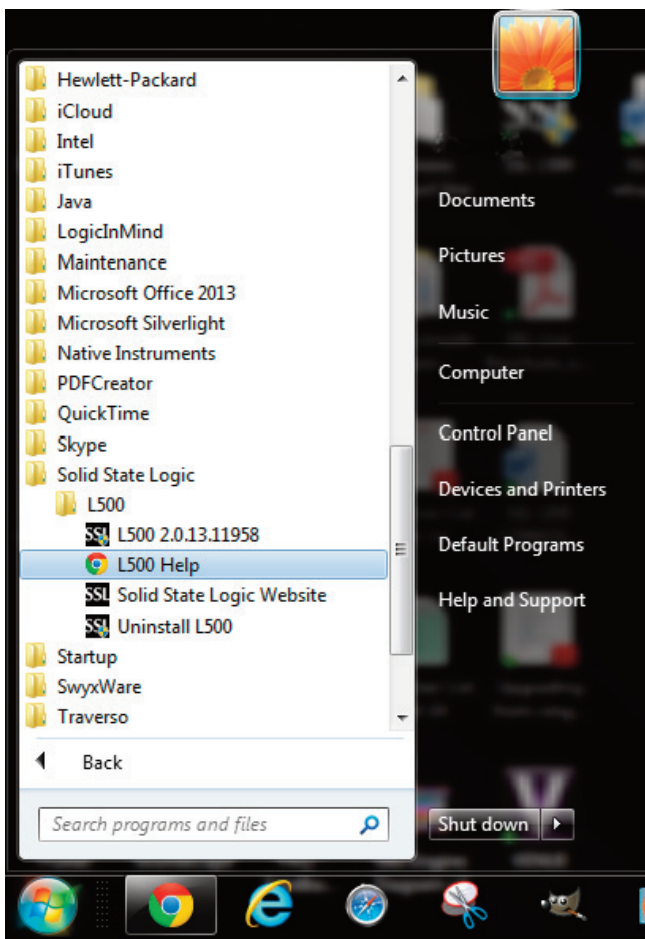
Note: The pop-up may look slightly different when using Windows 8 or 8.1

Click **Allow Access** on all pop-ups to proceed. You will only need to do this once.



SOLSA will now launch and a Solid State Logic splash screen and progress bar will appear. The initial launch of the software can take some time.

Help System



A Help system is included with the software. This is the same system that is built into the Live console software.

To access it go to the Start Menu > All Programs > Solid State Logic > L500 > L500 Help, or search programs and files for "L500 Help".

The Help system will open in your default web browser. Use the links on the left of the screen to view information on different topics.

(The screenshot to the left is from Windows 7)

Live Showfile Basics



Getting Started

The Help system contains detailed information concerning working with Showfiles and starting to use the Live console software within its Tutorial section. This system is designed to guide you step by step, but here are some basic instructions on working with Showfiles:

The first time you open the SOLSA application it will load a blank template. This will have two Talkback Channels and three Solo Channels, but no other paths will have been created. You can edit this template and create your own configuration or load an alternative template.

There are a number of SSL Templates available, go to Menu>Setup>Showfiles and then click the **SSL Templates** button. Click on the template in the list to view an explanation of the configuration in the notes window at the bottom of the screen.

To use the selected template press and hold **LOAD**.

Saving Showfiles

Load/Save Destinations

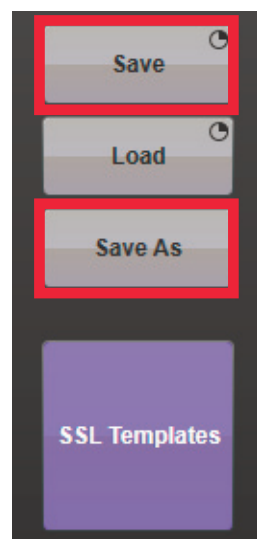
If you have not connected any USB drives the internal hard drive of your PC will be shown as **HD** (see screen shot below). When you connect a USB drive it will appear as USB1 and additional USB drives will appear as USB2, 3 etc.

Click on the drive buttons to select them.



Note: We do not recommend that you save or load Showfiles directly to a USB drive as once it is removed the system will no longer be able to find the Showfile. Save to the internal drive first (HD) then copy to the USB drive. When importing a Showfile, copy to the internal drive first then load from the HD, not from the USB drive.

Saving options



Save

The **Save** button is a press and hold button (designated by the clock in the top right of the button). This will save the current Showfile to the highlighted Showfile and overwrite the file.

Save As

If the Showfile you are working on was created from an **SSL Template** then you will need to save the file under a new name. This is done by clicking on **Save As** and entering the new name.

Exporting Showfiles

Showfiles created or edited with SOLSA can be exported to a USB drive and then imported into a Live console. All the required operations are identical on both the Live console and SOLSA.

If you have not already, connect a USB drive to your PC. In the Showfiles menu select **HD** and click on **EDIT**. This will open a window on the right which allows you to select your destination drive. Click on the USB drive you wish to use as your destination (USB1 etc). Click in the edit column (red box) of the Showfile list on the left, so they turn red. These are the files you are selecting for export. Then click **COPY** in the centre column and the selected Showfiles will be copied to the USB drive. These can then be imported into a Live console (see below).



Importing Showfiles

The process for importing a Showfile from a USB drive into SOLSA is a similar process to Exporting (see above).

Connect the USB drive that contains the file to your PC and go to the Showfiles menu (Menu>Setup>Showfiles). Select the USB drive and then click on **EDIT** in the centre column. In the right-hand window click **HD**, this selects the internal drive as the destination. Click in the edit column of the file (or files) you wish to import. Then click on **COPY** and the selected files will be imported to your PC's internal drive.

Automation and Scenes

If you are working with multiple scenes within the Automation system it is important that you update changes to your scenes using the Store function. This can be found by accessing Menu>Automation then clicking on Store in the right hand column. The Store button will be purple if there are changes to the current scene that have not been updated.

Known Issues

It is not currently possible to assign the Main or Focus fader paths from the PC software.

Viewing the software on a screen smaller than 1280 x 1024 resolution can result in some elements not rendering correctly.

If using a multiple monitor setup the pop-up keyboard and dialogue boxes may not appear on the same screen as the main application. It can be dragged, by clicking on the bar at the top of the keyboard pop-up, to a more convenient area.

It is not currently possible to rename presets or preset folders.

Troubleshooting

Help system does not display correctly in my web browser (Internet Explorer etc.)

JavaScript must be enabled to view the Help system correctly.

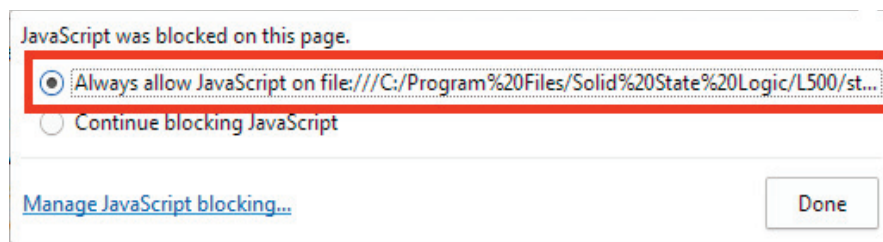
Chrome


Click on the Help link to open the page in your Chrome browser.

Click on the  icon to the right of the address bar:



Select "Always allow JavaScript on file..." and click **Done**:



Refresh the page by pressing F5 on your keyboard or clicking on the  icon to the left of the address bar.

Note: This will only enable JavaScript for the SSL Live Help. JavaScript settings for all other sites remain unchanged. To change JavaScript settings for all sites, please visit <http://enable-javascript.com/#chrome>

Internet Explorer

Click on the Help link to open the page in your Internet Explorer browser.

Click on 'Allow blocked content' at the bottom of the page:

Internet Explorer restricted this webpage from running scripts or ActiveX controls.

Allow blocked content



Note: This setting is not stored in Internet Explorer. You will need to allow this content each time you open the Help system. To enable JavaScript permanently for all sites (per-site settings in Internet Explorer are not available at time of writing), please visit <http://enable-javascript.com/#ie>

Mozilla Firefox

Please visit <http://enable-javascript.com/#firefox>

Apple Safari

Please visit <http://enable-javascript.com/#safari>

Opera

Please visit <http://enable-javascript.com/#opera>

ENHANCEMENTS FROM V2.0

Note: This section only contains explanations of feature enhancements that relate directly to SOLSA and its operation. There may be further enhancements that are part of the full Live console software update that are not mentioned here. Please refer to the Help system for full details.

Effects Rack Enhancements:

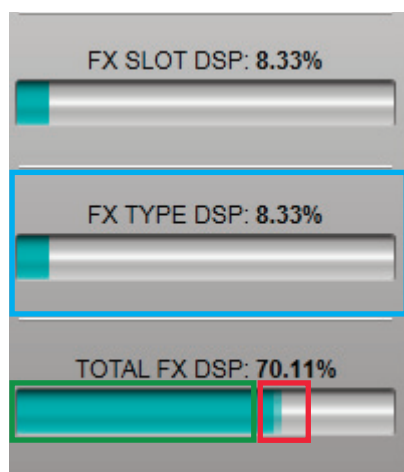
Tempest Effects Optimisation: As part of the on-going development of our Tempest processing engine and our patented OCP technology we have developed new effects optimisation processes to increase the potential of Live's Effects Rack. This V2.1 software release is the first to benefit from these developments. The Effects Optimisation means the Effects Rack now operates more efficiently, allowing greater use of the slots in the Effects Rack and increased DSP resource performance. Each effect type is individually optimised using these new development tools.

The following effect types have been optimised for this V2.1 release:

EQ Types: G-Flex, Contour and Parametric

Average performance increase of 179%

Reverb Types: LeVerb and ERVerbs



Average performance increase of 56%

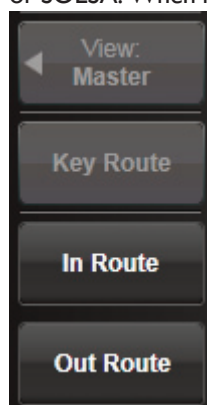
Note: All other effects types will be optimised in future Live software releases, increasing the benefits of this research still further.

Operational Changes: The Effects Optimisation process means that effects DSP is now used in a slightly different way, which requires some minor operational changes. These show how the Effects Optimisation processes are being implemented.

FX Type DSP Resource Bar (cyan box to the left): This shows how much DSP resource the selected effect type is using within the Total FX DSP. When some effect types are loaded the resource bar will show two shades of cyan (see *Total DSP Resource Bar* below). The FX Slot DSP resource bar continues to show the resource used by the currently selected FX slot.

Total FX DSP Resource Bar: The Total FX & FX Type DSP resource bars now show two pieces of information within the bar. The solid cyan section of the bar (green box) shows the amount of effects in 'active' use. The lighter section (red box) shows that there are optimised effects available in reserve. These can be used without any additional increase in overall DSP resource.

Additional Information: The Effects Optimisation process will benefit all Showfiles built on an earlier version of Live software or SOLSA. When loaded the Effects Optimisation will be applied if the effects types listed above (EQ & Reverb Types) are used in the Effects Rack, reducing the overall FX DSP resource and allowing more effects to be used from that point. For this reason care should be taken with V2.1 Showfiles and backwards compatibility with consoles running V2.0 software or earlier.



Routing from the Effects Rack: It is now possible to route effect inputs, outputs and key inputs from within the Effects Rack. Tapping the Key, In or Out Route buttons within the Effects Detail view will open the standard routing menu used throughout the Live console software.

Additional Benefits: This feature also allows daisy chaining of effects within the Effects Rack and also inclusion of both external and internal routing within the Insert routing signal chain.

Additional Notes: Routing of Mono, Stereo and LCR formatted effects can be done automatically when a correctly formatted path is used as the source or destination. The 'Auto Route Return' function available within the Insert A & B Detail View is not available from the Effects Rack routing menus.

Options Menu Enhancements: A number of enhancements and new features have been added to the Options menu. The menu now has Tabs which select between Console and User Options:



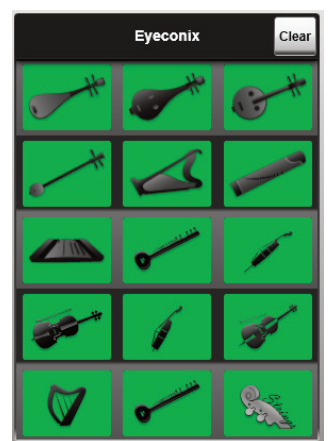
The **Console Tab** contains options that relate to the Live console setup such as Meter and System Clock settings. The **User Tab** contains options relating to the setup of the workflow of the Live console such as Solo and Mix Select Mode settings.

Eyeconix Enhancements:



As the first step to incorporating international languages and instruments into the Live console a set of simplified Chinese characters (left example) are now available in the Eyeconix menu under the **Symbols** category.

Traditional Chinese instruments have also been added to the **String** and **Wind** categories (right example).



END USER TERMS & CONDITIONS AND LICENCE AGREEMENT

PLEASE READ CAREFULLY: THE USE OF SSL's SOLSA (SSL OffLine Software Application) SOFTWARE ("SOFTWARE") IS SUBJECT TO THE TERMS AND CONDITIONS THAT FOLLOW ("TERMS & CONDITIONS"). RED LION 49 LIMITED TRADING AS SOLID STATE LOGIC ("SSL") AND ITS SUPPLIERS RESERVE ALL RIGHTS NOT EXPRESSLY GRANTED TO YOU.

BY DOWNLOADING, INSTALLING, COPYING, ACCESSING, OR USING THE SOFTWARE, OR BY CHOOSING THE "I ACCEPT" OPTION LOCATED ON OR ADJACENT TO THE SCREEN WHERE THESE TERMS & CONDITIONS AND ANY OTHER AGREEMENT MAY BE DISPLAYED, YOU AGREE TO THE TERMS DISPLAYED, ANY APPLICABLE WARRANTY STATEMENT AND THE TERMS & CONDITIONS. IF YOU ARE ACCEPTING THESE TERMS & CONDITIONS ON BEHALF OF ANOTHER PERSON OR A COMPANY OR OTHER LEGAL ENTITY, YOU REPRESENT AND WARRANT THAT YOU HAVE FULL AUTHORITY TO BIND THAT PERSON, COMPANY, OR LEGAL ENTITY TO THESE TERMS. IF YOU DO NOT AGREE TO THESE TERMS & CONDITIONS, DO NOT DOWNLOAD, INSTALL, COPY, ACCESS, OR USE THE SOFTWARE, AND PROMPTLY RETURN THE SOFTWARE WITH PROOF OF PURCHASE TO THE PARTY FROM WHOM YOU ACQUIRED IT AND OBTAIN A REFUND OF THE AMOUNT YOU PAID, IF ANY. IF YOU DOWNLOADED THE SOFTWARE, CONTACT THE PARTY FROM WHOM YOU ACQUIRED IT.

IF THE SOFTWARE LICENSED UNDER THESE TERMS & CONDITIONS IS IN BETA FORMAT ("BETA SOFTWARE") IT IS MADE AVAILABLE TO YOU FOR THE PURPOSE OF ASSESSING THE BETA SOFTWARE'S PERFORMANCE, INCLUDING THE IDENTIFICATION OF ANY ERRORS OR DEFECTS IN THE BETA SOFTWARE. YOU HEREBY ACKNOWLEDGE THAT THE BETA SOFTWARE MAY (AND WILL LIKELY) CONTAIN DEFECTS OR ERRORS AND THAT YOUR USE OF IT IS ENTIRELY AT YOUR OWN RISK. YOU ARE ADVISED TO SAFEGUARD ALL DATA AND TO NOT RELY ON THE CORRECT FUNCTIONING OR PERFORMANCE OF THE BETA SOFTWARE, INCLUDING ANY MATERIALS OR OTHER ACCOMPANIMENTS TO IT. ALL REFERENCE TO SOFTWARE IN THESE TERMS & CONDITIONS SHALL INCLUDE THE BETA SOFTWARE.

These Terms & Conditions are a legal agreement between you, the licensee, and SSL. Please read the Terms & Conditions carefully before installing the Software.

1. COPYRIGHT

You agree that the Software contains proprietary content, information and material that is protected by applicable intellectual property and other laws, including but not limited to copyright, and that you will not use such proprietary content, information or materials in any way whatsoever except for permitted use of the Software. No portion of the Software may be reproduced in any form or by any means. You agree not to modify, rent, lease, loan, sell, distribute, or create derivative works based on the Software, in any manner, and you shall not exploit the Software in any unauthorised way whatsoever. SSL, and its licensors, reserve the right to change, suspend, remove, or disable access to any Software at any time without notice. In no event will the SSL or its licensors be liable for the removal of or disabling of access to any such Software.

2. LICENCE AND COPY RESTRICTIONS

SSL grants you a non-transferable licence to use the Software on a single user computer, or on a single terminal or workstation of a multi-user computer or local area network, or on multiple computers as determined by your purchase or the terms of your trial. You may not rent, lease, lend, sell, redistribute or sub-licence the Software. You may not copy (except as expressly permitted by this licence), decompile, reverse engineer, disassemble, attempt to derive the source code of, modify, or create derivative works of the Software, any updates, or any part thereof. Any attempt to do so is a violation of the rights of SSL and its licensors. SSL reserves its rights should you breach the terms of these Terms & Conditions and any other agreement connected to it including but not limited to the WIBU Software Licence to take such action against you as is necessary to preserve its rights and those of its licensors. The terms of the licence will govern any upgrades provided by SSL that replace and/or supplement the original Software, unless such upgrade is accompanied by a separate licence in which case the terms of that licence will be the governing terms.

3. TERMINATION

This licence is effective until terminated. This licence will terminate automatically, without notice from SSL, if you fail to comply with this Agreement. Upon such termination, you must cease all use of the Software and shall destroy all copies of the Software.

4. LIMITED WARRANTY

You expressly acknowledge and agree that use of the Software is at your sole risk and that the entire risk as to satisfactory quality, performance, accuracy and effort is with you. To the maximum extent permitted by applicable law, the Software and any services performed or provided by the Software ("Services") are provided "as is" and "as available", with all faults and without warranty of any kind, and SSL hereby disclaims all warranties and conditions with respect to the Software and any Services, either express, implied or statutory, including, but not limited to, the implied warranties and/or conditions of merchantability, of satisfactory quality, of fitness for a particular purpose, of accuracy, of quiet enjoyment, and non-infringement of third party rights. SSL does not warrant against interference with your enjoyment of the Software, that the functions contained in, or Services performed or provided by, the Software will meet your requirements, that the operation of the Software or Services will be uninterrupted or error-free, or that defects in the Software or Services will be corrected. No oral or written information or advice given by the application provider or its authorised representative shall create a warranty. Should the Software or Services prove defective, you assume the entire cost of all necessary servicing, repair or correction. Some jurisdictions do not allow the exclusion of implied warranties or limitations on applicable statutory rights of a consumer, so the above exclusion and limitations may not apply to you.

5. LIMITATION OF LIABILITY.

To the extent not prohibited by law, in no event shall SSL be liable for personal injury, or any incidental, special, indirect or consequential damages whatsoever, including, without limitation, damages for loss of profits, loss of data, business interruption or any other commercial damages or losses, arising out of or related to your use or inability to use the Software, however caused even if SSL has been advised of the possibility of such damages. Some jurisdictions do not allow the limitation of liability for personal injury, or of incidental or consequential damages, so this limitation may not apply to you. In no event shall application provider's total liability to you for all damages (other than as may be required by applicable law in cases involving personal injury) exceed the amount of fifty dollars (\$50.00). The foregoing limitations will apply even if the above stated remedy fails of its essential purpose.

6. SEVERANCE

The invalidity, unenforceability or illegality of any provision (or part of a provision) of these Terms & Conditions under the laws of any jurisdiction shall not affect the validity, enforceability or legality of the other provisions.

7. GOVERNING LAW AND JURISDICTION

These Terms & Conditions are governed by the laws of England and Wales and you hereby submit to the exclusive jurisdictions of the courts of England and Wales. Your use of the Software may also be subject to other local, state, national, or international laws.